

# MONTHLY MEMBERSHIP PROGRESS REPORT

LOCATION IOWA

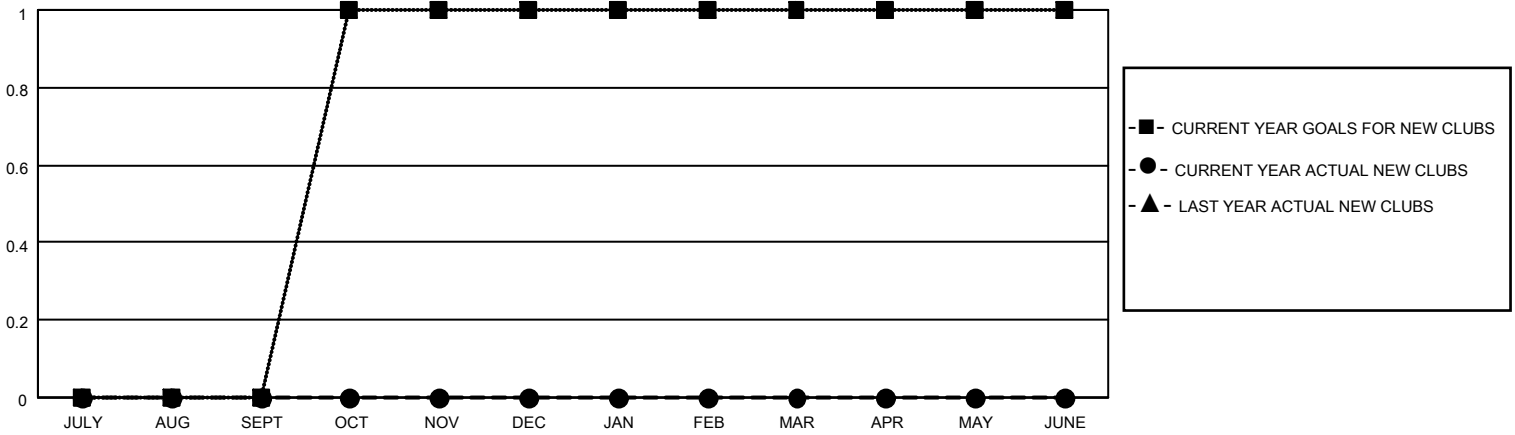
District 9 EC

Results as of: 1/31/2023

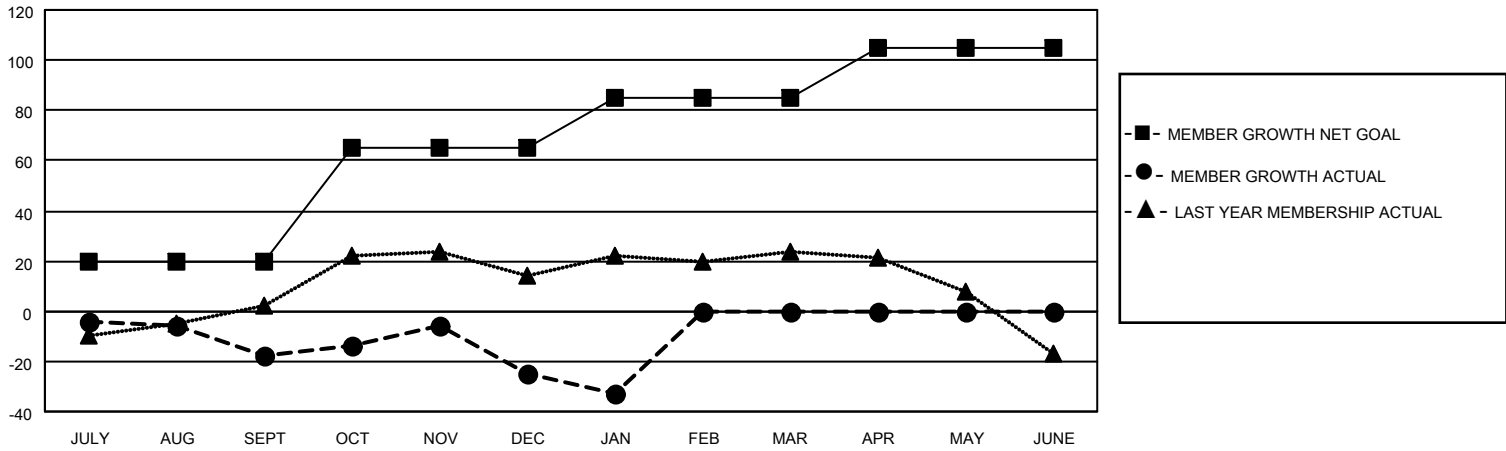
Clubs			
RESULTS FOR 2022-2023			
QUARTER	NEW CLUB GOAL	NEW CLUBS	DROPPED CLUBS
JULY/AUG/SEPT	0	0	0
OCT/NOV/DEC	1	0	0
JAN/FEB/MAR	0	0	0
APR/MAY/JUNE	0	0	0

Members			
RESULTS FOR 2022-2023			
QUARTER	MEMBER GROWTH NET GOAL	MEMBER GROWTH ACTUAL	DROPPED MEMBERS ACTUAL (including transfers)
JULY/AUG/SEPT	20	27	42
OCT/NOV/DEC	45	34	35
JAN/FEB/MAR	20	6	12
APR/MAY/JUNE	20	0	0

**GOALS AND ACTUAL NEW CLUBS CUMULATIVE**



**GOALS AND ACTUAL MEMBERS CUMULATIVE**



**DROPPED CLUBS: 0**

**18 CLUBS OF 43 ADDED 1 OR MORE NEW MEMBERS**

**GENDER DISTRIBUTION**

MALE	811 (68.55%)
FEMALE	372 (31.45%)
NON BINARY	0 (0.00%)
PREFER NOT TO ANSWER	0 (0.00%)

**DROPPED MEMBERS**

DECEASED	17
CLUB CANCELLED	0
OTHER	72
<b>TOTAL</b>	<b>89</b>

[CLICK HERE FOR CUMULATIVE MEMBERSHIP DATA](#)

TOTAL FAMILY UNIT MEMBERS	316
FAMILY MEMBERS PAYING HALF DUES	162